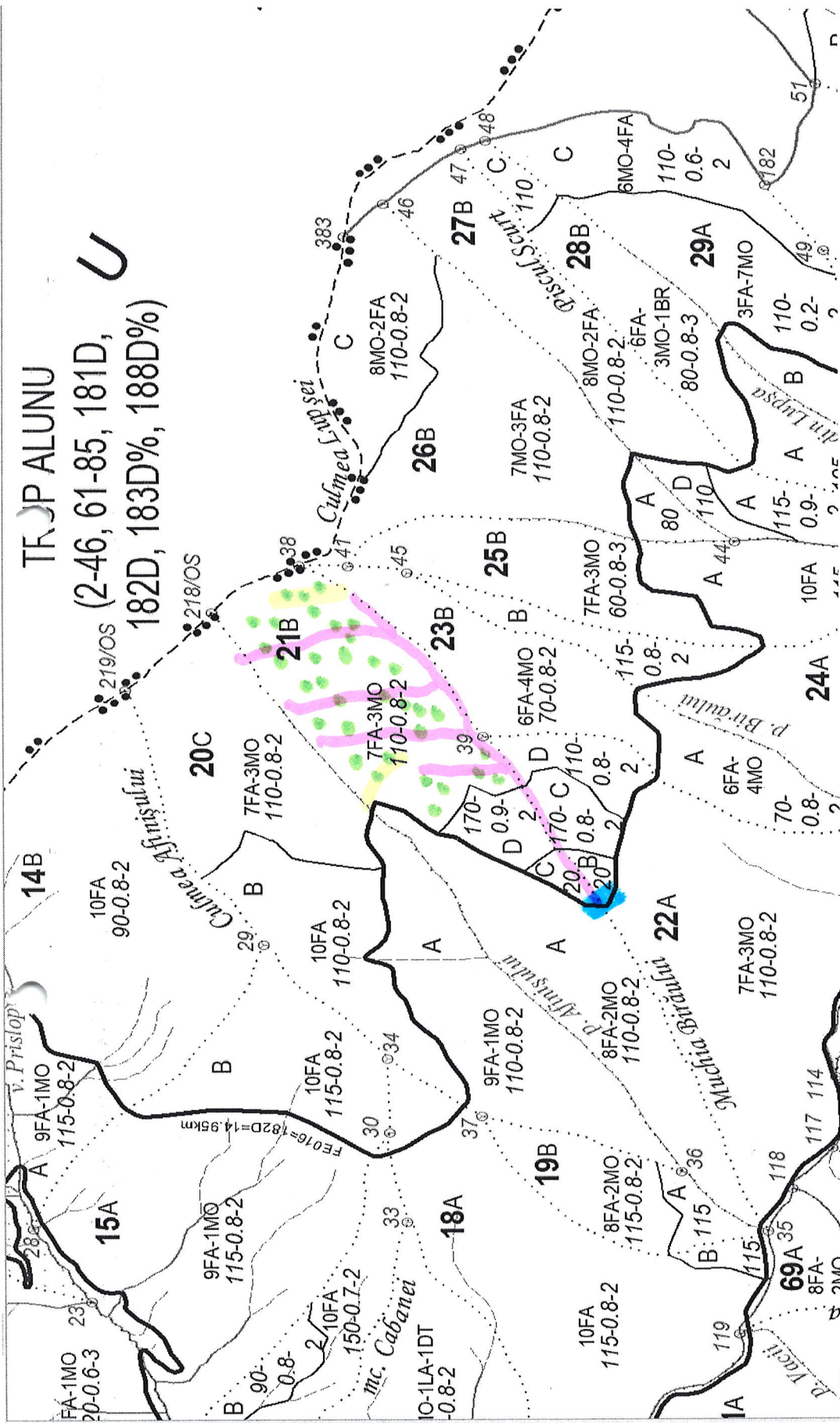


TR. P. ALUNU

(2-46, 61-85, 181D, 182D, 183D%, 188D%) U



APV 59

U.P. V MAGURENI

u.a. 21B

Suprafata parchet: N 45.693247
E 23.377398

Platforma primara: N 45.692316
E 23.373605

I.S.A. Existent
I.S.A. Necesari

SEF. OCOL,
ING. OPRISA ROMULUS NICOLAE



INTOCMIT,
ING. URITOIU DOREL

[Handwritten signature]