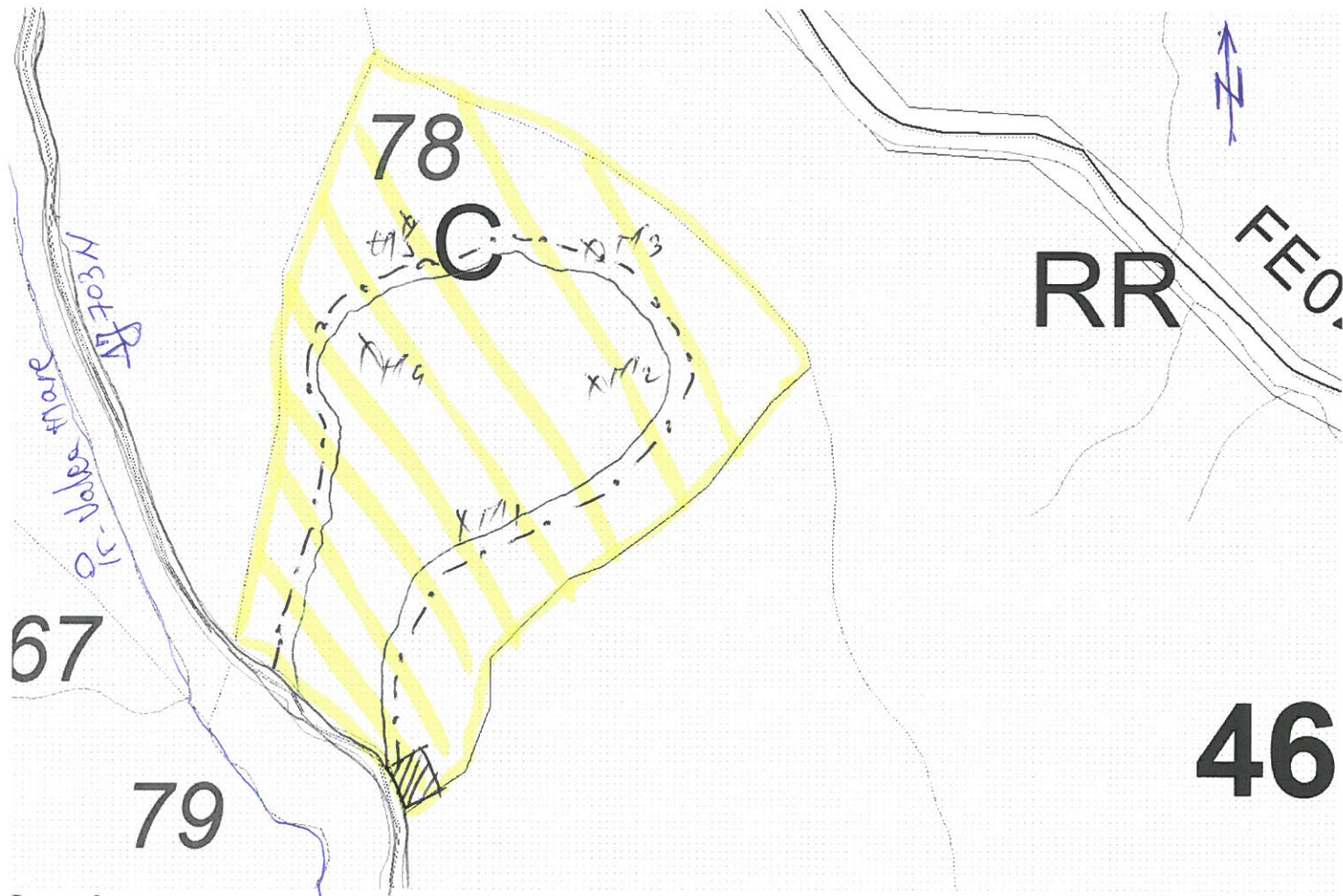


Ocolul Silvic Calimanesti
 UP VI Berislavesti
 u.a.43C
 Cvasigradarite

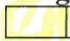
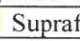
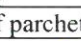



Avizat
 Sef ocol



Schita
 cu amplasarea partizii nr.35S Valea Mare /SUMAL 2400152002180



Legenda :

	Supraf parchet		D.A.F.		Drum tractor		Platforma primara		M1, M2		Lemn mort
--	----------------	---	--------	---	--------------	---	-------------------	---	--------	---	-----------

Scos-apropiat 0-250.....m ; Transport pe DAF 3 Km ;Panta30°.....
arbori de limita pe care s-a aplicat marca patrata - M1 - 4 = Lemn mort

Coordonate geografice

	u.a.	Latitudine	Longitudine
Parchet	43C	45,303 700	24,397040
Platforma	43C	45,303 788	24,396361

ROSCIO46 Cogia
 ROSPA025 Cogia - Baile Vintarareta

Parchetul se situeaza/nu se situeaza in cadrul unei aii naturale protejate Parcul National Cogia
 Caile de colectare trec/nu trec prin proprietati particulare _____

Intocmit
 Dinca Viorel-sef distric

